



**GREEN BEACON  
SOLUTIONS**



## CompassPoint Solutions Production Dashboard

Full production information at your finger tips

### About Us

Green Beacon Solutions partners with clients to implement integrated financial, supply chain, sales automation, and marketing business solutions built on proven Microsoft technologies. Our unique combination of technology, people, and process quickly help identify and implement expert strategies that support our client's business objectives within the distribution, professional services, banking/banking services, and manufacturing industries.

### Why Green Beacon?

Our technology and consulting expertise, combined with our success in solving customer issues, have resulted in our unmatched industry reputation. We have an outstanding track record developing, delivering, and integrating ERP, CRM BI and Marketing Automation technology solutions that deliver direct business benefits for our customers.

**“Our Production Manager immediately recognized the utility of the CompassPoint Production Dashboard.”**

### Why CompassPoint Production Dashboard?

CompassPoint Production Dashboard presents a complete overview of information about financial and logistic deviations in a production order. The status of production orders is available at a glance, so timely action can be taken to preclude potential problems in a production order. This prevents orders from being incorrectly entered into your financial administration system or structurally incorrect actions from continuing, thereby guaranteeing supply reliability. Once the parameters have been determined and configured, CompassPoint Production Dashboard is a reliable instrument to help check and optimally control your production process.

### What is CompassPoint Production Dashboard?

The CompassPoint Production Dashboard consists of a single screen, the Dashboard, which provides financial and logistic information about production orders. CompassPoint Production Dashboard is easy to operate, flexible and customisable. The system can be configured according to specific wishes and needs. CompassPoint Production Dashboard compares financial data that is linked to certain stages in the production process, such as the cost price, with the estimated cost or the estimated cost with the

617.485.5000

[www.greenbeacon.com](http://www.greenbeacon.com)

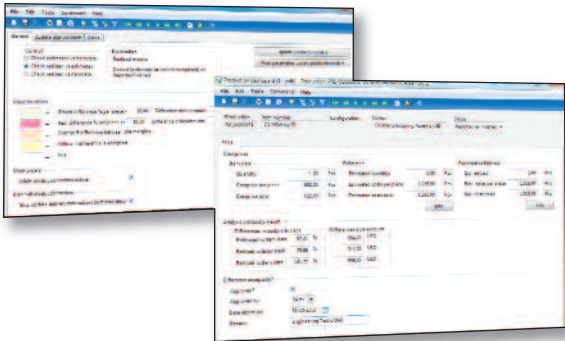
# CompassPoint Solutions Production Dashboard

actual cost. The system alerts to any deviations, so action can be taken to investigate the cause of the problem. This enables the problem to be solved, including for future orders. This Dashboard indicates if an order threatens to exceed the delivery date. The order concerned is flagged, to clearly indicate its priority. This allows an immediate response so the delivery date can still be met.

## What are the advantages?

CompassPoint Production Dashboard offers the following advantages:

- Management by exception: Saves time, as your focus is on the deviation
- Visual Management: User-friendly thanks to the clear use of signs and colours
- Control loop: Prevents the continuation of incorrect actions
- Increases delivery reliability
- Correct lead-up to entry into the ledger
- Maintains cost price accuracy by comparing the estimated cost/actual cost



- Limits loss of turnover/loss of profit by comparing the estimated cost/actual cost
- Easy-to-print reports

Maintain Microsoft Dynamics AX with Green Beacon's

## SmoothSail Managed Services

- Dedicated support staff at our Newton, MA HQ
- On-demand and cost-effective management services for CRM and ERP applications
- Advisory services to increase business efficiency by improving system usage
- Support and maintenance services to reduce down-time and ensure productivity so that systems operate at high availability



- Established in 2001
- Headquartered in Boston, Massachusetts
- Offices in New York, Philadelphia, and Houston
- Specialists in Microsoft Dynamics Business Solutions
- ERP and CRM Consulting Services
- CompassPoint Solution Software Accelerators
- SmoothSail Support & Managed Services